

Lisboa, 9-10 December 2013

Fundação Calouste Gulbenkian



INTERNATIONAL CONFERENCE

HOUSING FIRST

Ending Homelessness

**At Home/Chez Soi Dissemination:
Demonstrating Value in Housing First Services**

Myra Piat

Organized by





Mental Health
Commission
of Canada

Commission de
la santé mentale
du Canada

At Home/Chez Soi Dissemination: Demonstrating Value in Housing First Services

**Myra Piat, PhD
Department of Psychiatry
McGill University, Douglas Mental Health University Institute**

**First International Conference on Housing First
Lisbon, Portugal**

11-13 June 2013

What Does Knowledge Dissemination



Mental Health
Commission
of Canada

Commission de
la santé mentale
du Canada

Mean?

- Transfer of knowledge within and across settings
- Expectation that knowledge will be used conceptually or instrumentally



Mental Health
Commission
of Canada

Commission de
la santé mentale
du Canada

National Film Board Clip



Knowledge Dissemination



Mental Health
Commission
of Canada

Commission de
la santé mentale
du Canada

- Can take place at the end of a project
- Traditional peer reviewed publications
- Passive, unplanned – “just let it happen”



Mental Health
Commission
of Canada

Commission de
la santé mentale
du Canada

Integrated Knowledge Translation

- Active process
- What did we do during the project?
- What did we do after the project?



Mental Health
Commission
of Canada

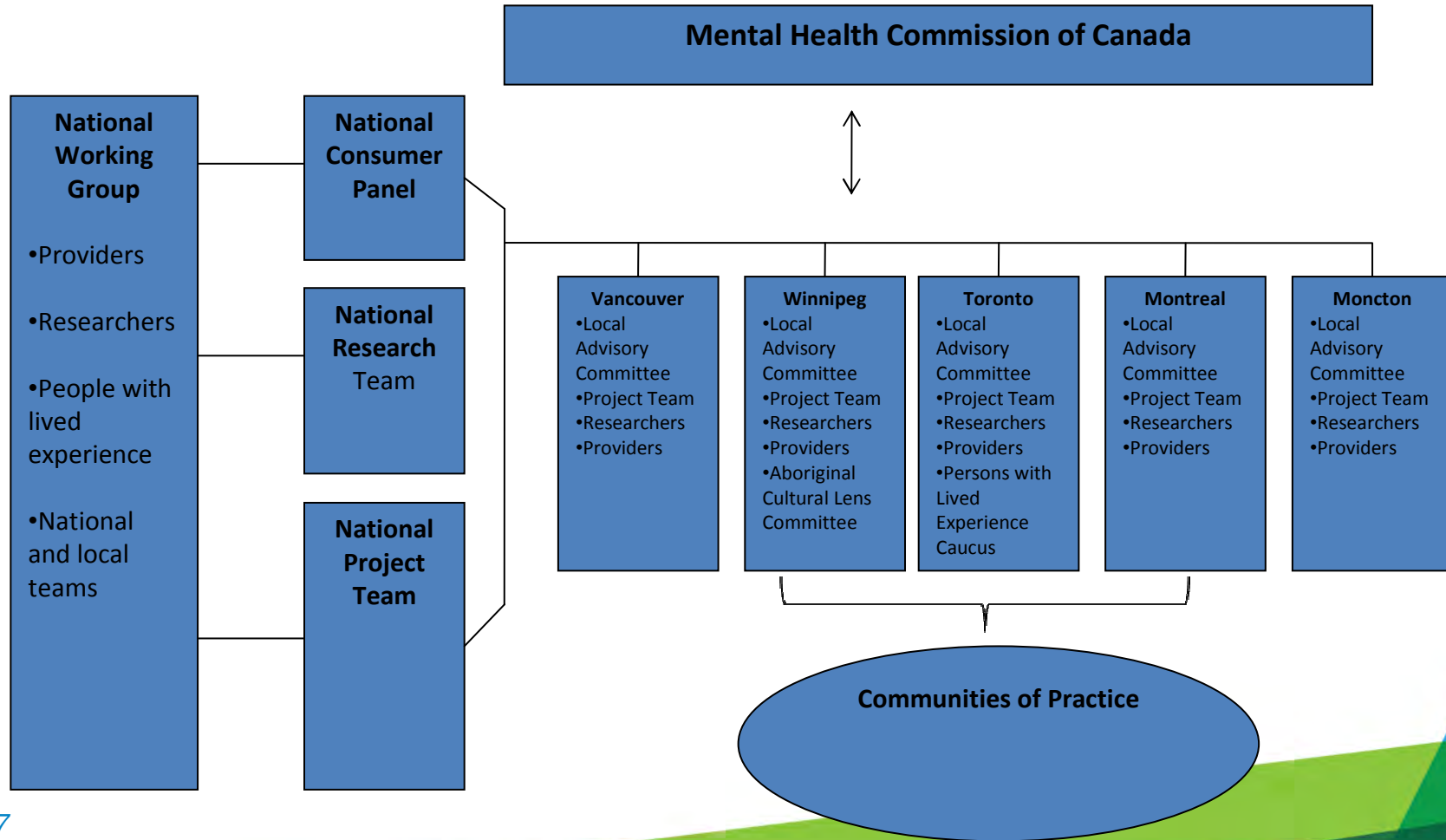
Commission de
la santé mentale
du Canada

Key Strategies for Knowledge Translation

- Build Housing First literacy and competency in the field
- Advisory structures locally and nationally
- Communities of practice
- Government relations
- Media relations



Structure and Governance





Key Integrated Knowledge Translation Activities-During the Project

- Media coverage key events
- Community events to celebrate work
- Speakers Bureau and Focusing the Frame
- Release of Early Findings
- Posting of reports on MHCC website and Homeless Hub
- Partnership with the National Film Board
- Engagement of national allies
- Extensive government relations work in final year of the project

Focusing the Frame

A Participant Photography Project

Family

Having a mental illness always kept me apart from my family. Even when I was young it was always like I wasn't really together with them. I could be along side them, but I couldn't be one of them. My mental illness and a bad drinking problem meant that when I got older I lost my kid. I had another one later and I didn't get to see him either. Now that I've got a place of my own, I don't drink anymore, I feel so much better, and I get to see my kids. That never would have happened if I didn't get into the *At Home/Chez Soi* program.

/ 9



Knowledge Dissemination After the project

- Interactive Housing First Toolkit launched in Spring 2014
- How to plan a Housing First program?
- How to implement a Housing First program?
- How to sustain a Housing First program?
- How to evaluate a Housing First program?



Mental Health
Commission
of Canada

Commission de
la santé mentale
du Canada

Role of research evidence

- One of many factors that influence decision making - politics, personalities, financial cycles also key
- Interim results and experiential knowledge both influence governments
- Strong governmental relations and communications supports an asset



Mental Health
Commission
of Canada

Commission de
la santé mentale
du Canada

Acknowledgements

The national At Home/Chez Soi project team: Jayne Barker, PHD (2008-11) and Cameron Keller, MHCC National Project Leads; Paula Goering, RN, PhD, Research Lead and approximately 40 investigators from across Canada and the US. In addition there are 5 site coordinators and numerous service and housing providers as well as persons with lived experience.

This research has been made possible through a financial contribution from Health Canada to the Mental Health Commission of Canada. The views expressed herein solely represent the authors.



Mental Health
Commission
of Canada

Commission de
la santé mentale
du Canada

Thank you!

Visit: www.mentalhealthcommission.ca

Visit: www.athome.nfb.ca

Follow us on:



*The views represented herein solely represent the views of the presenters.
Production of this document is made possible through a financial contribution from Health Canada.*